

CITY



UNIVERSITY

Osaka City University Official Magazine



Vol.21
May 2016

CONTENTS

● Page 1 **Special Feature**

Message from the President

A warm welcome to
all new students!

● Page 1

Chronology and History

● Page 2

A Day in the Life of an OCU International Research Student

● Page 3

Quick Glance at OCU Faculties & Graduate Schools

● Page 5 **Research**

Professor Yasuhiro Fujiwara, Graduate School of Medicine

Professor Nobuyuki Kanda, Graduate School of Science

● Page 6 **Researchers**

Associate Professor Teruko Takada, Graduate School of Business

Associate Professor Miho Fukuda, Graduate School of Human Life Science

Professor Kenji Mizuseki, Graduate School of Medicine

● **Back cover**

International Student Profiles



A warm welcome to all new students!

Visit President
Arakawa's
Facebook



<https://www.facebook.com/tetsuo.arakawa.ocu/>



Welcome to Osaka City University

It is my aim to build a university of which students, alumni, Osaka residents, faculty, staff and all other stakeholders can be proud and where they can realize their dreams under the slogan “Glocal hub of wisdom and wellness filled with smiles”.

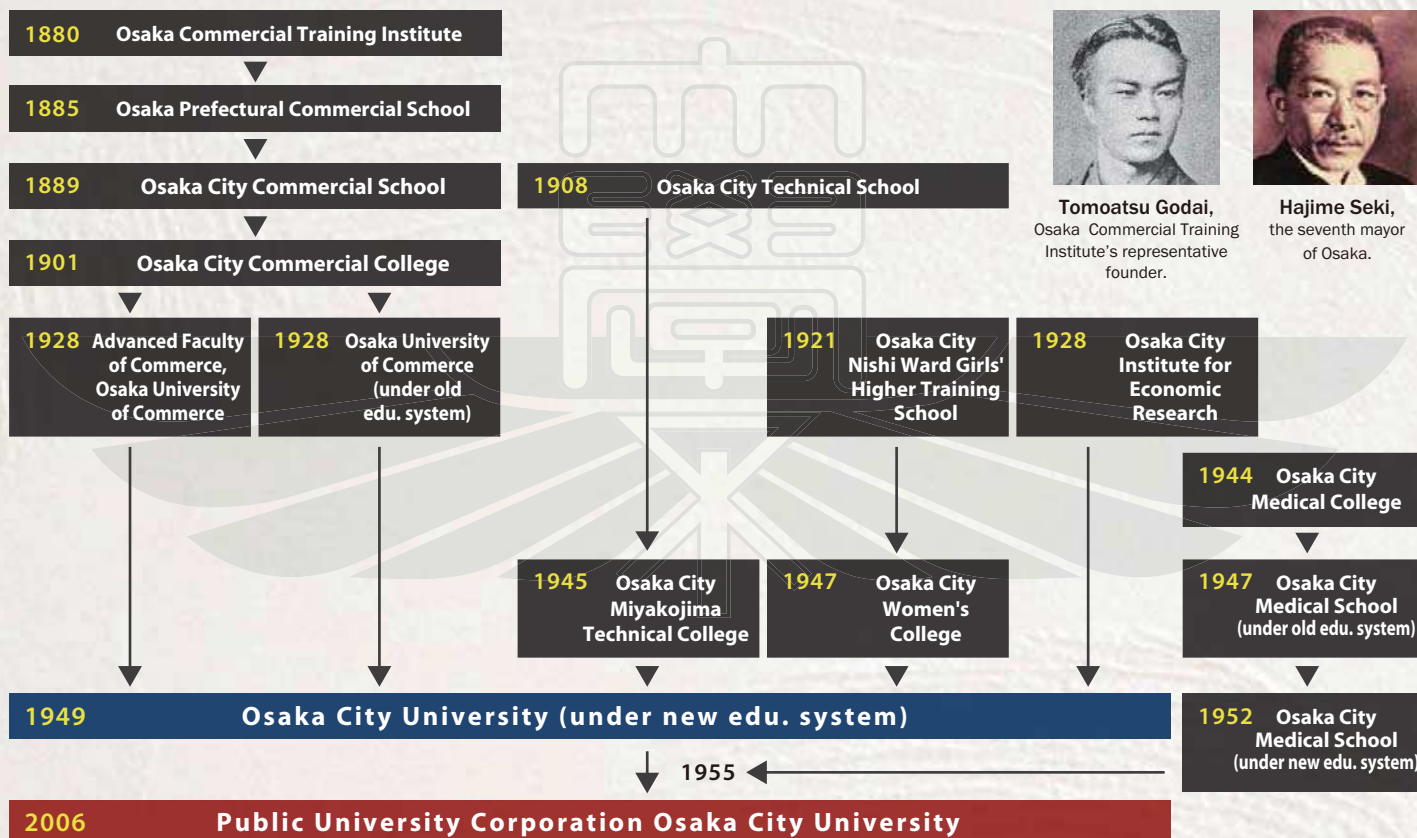
OCU boasts a long and continuous 136 years of history and tradition. As a student, you'll become part of it.

By knowing the history behind it, I hope your understanding and love for the university will grow deeper. Let's create a smile-filled OCU together.

Tetsuo Arakawa

President of Osaka City University

Chronology and History



For more details on OCU History, please visit our website: <http://www.osaka-cu.ac.jp/en/about/history>

A Day in the Life of an OCU International Research Student

Every year OCU admits research students who are not reading for a degree, but who would like to undertake a period of study at the graduate level under the guidance of OCU academic staff. Approximately one third of the graduate students at OCU take this route, in preparation for the entrance exam to enter a Master or Doctoral course. Research students can enroll for a minimum of six months and a maximum of two years.

9:00

Leave apartment to come to OCU

Yuxiang lives in an apartment at about 20 minutes from the university. He likes to walk there, so he can see normal daily life in his neighborhood. Every morning he first drops in at his research office for the Graduate School students.



12:00

Eat lunch at the North Cafeteria

Today Yuxiang chooses Kim-chi Bowl. The meals at the cafeteria are affordable and the quantities large. There are lots of menu choices, but Yuxiang's favorites are the Rice Bowl series because he loves rice. Sometimes he buys lunch at a convenience store nearby and eats with friends at his research office.



13:00

Attend Prof. Matsuura's class (Faculty of Literature & Human Sciences building)

Yuxiang is taking Professor Matsuura's Modern Literature class. It involves lots of reading of novels and literary reviews. Today it was his turn to do a presentation. By coincidence all students in this class are international students, but the class is still in Japanese.



16:20

Prepare for classes at the Media Center

Yuxiang's favorite place to study is the Free-Study Corner on the first floor of the library building (OCU Media Center). It gets quite busy, with even some high-school students in the evening, but the Media Center has lots of study places, so you can always find a spot.



19:00

Go to dinner with friends!

About once a week Yuxiang goes for a drink or dinner with friends from his research office. There are a lot of cheap eating and drinking places around the university, such as "Gyu-don" (beef bowl) restaurants; so you can try out a different one each time.





Quick Glance at OCU

8

Faculties

10

Graduate Schools

Students Total

8,279

MEXT Students

27

Academic Staff Total

711

As of May 1, 2016

Business

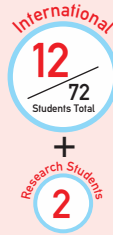
Undergraduate

- Management
- Management Information
- International Business
- Industry & Urban City Management
- Finance & Distribution
- Accounting



Graduate

- Strategic Management
- Management Information
- International Business
- Industry Creation
- Public & Environmental Management



Economics

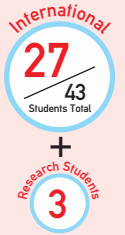
Undergraduate

- Economic Theory
- Economic Statistics
- Economic History
- Economic Policy
- Industrial Economics
- International Economics



Graduate

- Modern Economics, fields:
Markets & Institutions
Agents & Capabilities
Global & Regional Economics



Engineering

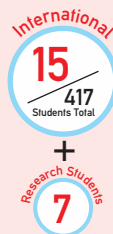
Undergraduate

- Mechanical Engineering
- Applied Physics & Electronics
- Electric & Information Engineering
- Applied Chemistry & Bioengineering
- Architecture & Building Engineering
- Urban Design & Engineering



Graduate

- Mechanical & Physical Engineering
- Physical Electronics & Informatics
- Applied Chemistry & Bioengineering
- Urban Engineering



Human Life Science

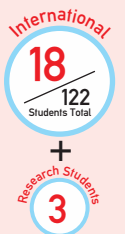
Undergraduate

- Food & Nutrition
- Housing & Environmental Design
- Human Development & Welfare



Graduate

- Food and Human Health Sciences
- Housing & Environmental Design
- Social Services
- Clinical Psychology



Faculties & Graduate Schools

Law

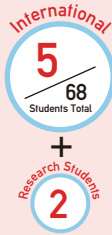
Undergraduate

- Judicial
- Public Administration
- Business & International Studies



Graduate

- Academic Course (Master and Doctoral Course)
- Law School (Professional Degree course)



Literature and Human Sciences

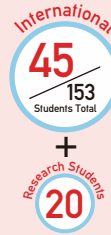
Undergraduate

- Philosophy and History
- Human Behavioral Sciences
- Language and Culture



Graduate

- Philosophy and History
- Human Behavioral Sciences
- Language and Culture
- Asian Culture & Urbanism



Science

Undergraduate

- Mathematics
- Physics
- Chemistry
- Biology
- Geosciences



Graduate

- Mathematics & Physics
- Molecular Materials Science
- Biology & Geosciences



Medicine / Nursing

Undergraduate

- Nursing

Graduate

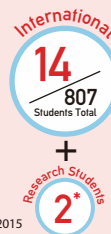
• Basic Medical Science:

Pharmacology, Biochemistry & Molecular Pathology, Physiology, Anatomy, Anatomy & Neurobiology, Applied Pharmacology & Therapeutics, Cellular Biology, Biochemistry, Environmental Pathology, Pathology, Preventive Medicine & Environmental Health, Public Health, Sports Medicine, Environmental Physiology for Exercise, Legal Medicine, Virology, Bacteriology, Immunology, Neuroscience, Molecular Genetics

• Clinical Medical Science:

Cardiology, Respiratory Medicine, Cardiovascular Hemodynamics, Gastroenterology, Hepatology, Metabolism Endocrinology and Molecular Medicine, Hematology & Laboratory Medicine, Neuropsychiatry, Drug & Food Clinical Evaluation, Radiology, Nuclear Medicine, Diagnostic Pathology, Anesthesiology, Critical Care & Traumatology, Graduate Medical Education, Pathophysiology of Obstetrics and Gynecology, Pediatrics, Geriatric Medicine, Surgical Oncology, Cardiovascular Surgery, Urology, Dermatology, Ophthalmology and Visual Sciences, Otorhinolaryngology & Communicative Sciences, Neurosurgery, Orthopedic Surgery

• Nursing



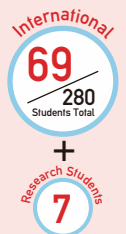
*As of Oct 1, 2015



Creative Cities

Graduate

- Entrepreneurship Study
- Asian Business Study
- Urban Economy & Regional Policy Study
- Urban Public Policy Study
- Urban Co-existing Society Study
- Knowledge Information Infrastructure Study
- Information Systems Innovation Study





RESEARCH

Smoking Cessation is the Path to Complete Therapy!

Smoking Cessation Therapy is Effective in the Treatment of Reflux Esophagitis



Professor Yasuhiro Fujiwara

Based on the collaborative study with the Department of Medical Education and General Practice, Graduate School of Medicine and the Uehonmachi Watanabe Medical Clinic, Professor Yasuhiro Fujiwara of the Department of Gastroenterology, Graduate School of Medicine and his colleagues determined, for the first time in Japan, that smoking cessation therapy is effective

in the treatment of gastroesophageal reflux disease (GERD).

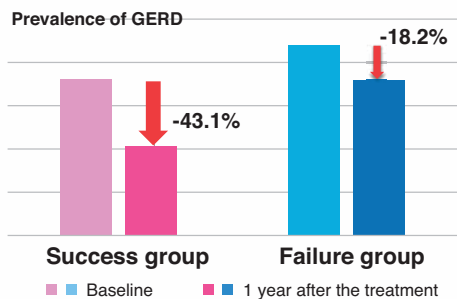
GERD is generally called reflux esophagitis, whose major symptoms are heartburn or acid reflux, and it impairs quality of life (QOL). In Japan, GERD, which has increased since the 1990s, is one of the most common gastrointestinal diseases and approximately 10 to 20% of adults may currently suffer from GERD.

In this study of patients diagnosed with GERD who had undergone smoking cessation therapy, success or failure of smoking cessation and symptoms after 1 year were investigated. The results showed that the symptoms in the success group significantly improved and smoking cessation therapy is effective in the treatment of GERD.

The results of this study indicate that patients may overcome the disease just by improving a lifestyle habit as a result of the patient's own choice.

GERD symptoms were improved by 43.1% in the success group but only by 18.2% in the failure group.

Smoking Cessation Therapy is Effective in the Treatment of GERD!



Observation of Gravitational Waves Predicted by General Theory of Relativity

Using Gravitational Waves to Understand Physics of Black Holes and Nature of High-Energy Astronomical Objects



Professor Nobuyuki Kanda

In February 2016, a US gravitational wave project, LIGO, announced their observation of gravitational waves for the first time in human history. Gravitational waves are wave propagations of the spacetime distortion at light speed as predicted by Einstein using his general theory of relativity. However, they had never been measured directly until this point. So, the first observation of gravitational waves was heralded as a major achievement in the history of physics.

The lab of Professor Nobuyuki Kanda of the Graduate School of Science is one of the main groups involved in the Japanese gravitational wave observation project KAGRA, and the central base for observational data analysis in gravitational wave astronomy. Data recorded by the laser interferometer of the KAGRA

gravitational wave telescope built in the Kamioka mine in Gifu prefecture is received by the University's gravitational wave data analysis computer just 3 seconds later. This data is analyzed in an attempt to observe very weak signals of gravitational waves. The ability to observe gravitational waves is expected to enable explanation of cosmic phenomena such as black holes, supernova explosions, gamma ray bursts, neutron stars and the inflationary universe.

Professor Kanda's lab hopes to soon be able to observe gravitational waves with the KAGRA detector. The lab's aim is to use observed gravitational waves in studies of the physics of black holes and strong gravitational fields, to describe the nature of the many high-energy astronomical objects existing in the cosmos.



Professor Kanda and associated professor Tagoshi speak at a well-attended press conference to explain the aims of the LIGO project announced by the US.



The gravitational wave data analysis computer at the University

Researchers in Focus



Professor Yasuhiro Fujiwara,
Graduate School of Medicine

Professor Yasuhiro Fujiwara likes to collect various things such as stationery, novels and hats. His child wonders why he buys only inexpensive things. He has more than 2,000 classical music CD's. Professor Yasuhiro Fujiwara, who is a collector, smiled and said, "I never buy expensive things for me but a gift for my wife is a special case!"



Researchers in Focus



Professor Nobuyuki Kanda,
Graduate School of Science

Professor Kanda earned his degree from an experimental study of elementary particles. He states that at one point in his career, he had studied three of the four basic interactive forces found in nature—electromagnetism, the strong force and the weak force. Gravity (the fourth interactive force) was the only one he hadn't studied directly. So when a project to build a large laser interferometer in Japan arose in the 1990s, Kanda was eager to take part, forming an ambitious wish to become involved in gravity research and thereby complete the 'grand slam' of all four interactive forces. He soon found himself specializing in gravitational wave physics.



RESEARCHERS

Associate Professor Teruko Takada, Graduate School of Business

Associate Professor Takada specializes in computational finance. Using statistics and information technologies, she studies investor behavior in financial markets in a data-driven manner. She is particularly interested in the mechanisms of sudden large changes caused by human collective behavior such as financial bubbles, and investigating emergent patterns observed before and after such crises.

Associate Professor Takada believes that it is important to understand basic facts shown by data before adopting simulation-based approaches, which have been primarily used in previous literature. In the PhD program at University of Illinois, she studied nonparametric statistics, which does not make any assumptions about the probability distributions of the variables being assessed, and developed several analytical

techniques. By applying them to large-scale and high frequency stock market numerical data (whose total size is approximately 300 TB!) as well as text data from the internet, newspapers, and so on, she observes true investor behavior, and discovers useful facts for predicting and regulating collective motion generating sudden large changes.

Financial markets have an attractive characteristic for analyzing social collective behavior in that it is composed of a huge number of people and all the transactions have been electronically recorded. Useful findings in financial markets could also open up possibilities for applying it to other fields, such as crowd behavior during disasters. Energetically engaging in her research, it is Associate Professor Takada's goal to produce research results that help solve problems in our society.



Another side

Associate Professor Takada says it's hard to find time for herself due to her busy schedule. When she does have some chance to relax, she spends time with her family enjoying being in nature and doing sports, such as hiking, mountain climbing, cycling, tennis, and swimming. Recently, she has been visiting castles more frequently, reflecting her sons' interest in Japanese history of the Sengoku period.

Associate Professor Miho Fukuda, Housing and Environmental Design, Graduate School of Human Life Science

Associate Professor Fukuda specializes in Chinese architectural history. Focusing primarily on palaces, gardens, and cities, she studies why humans designed spaces like they did, as well as how these spaces have been used.

Since architectural history is a field that came from the West, even in a place like China where many historical texts are preserved, there are basically no classical documents relating specifically to architecture. Thus, she approaches the enigma of human-designed spaces in the country using brief textual descriptions. For example, it has been said that after Mongolians began ruling China in the thirteenth century, they imitated and used Chinese-style palaces. However, looking into this issue carefully, one finds passages in texts that say that tents were used on palace

grounds. From this it can be understood that Mongolian rulers needed both Han-style wooden palace architecture as well as the tents that they customarily used.

When reading historical materials, sometimes misunderstandings arise due to one's own preconceptions and customs. It is very difficult to know what kind of spaces existed in the past. Associate Professor Fukuda says that the true pleasure of her research lies in the process of exploring spatial designs while thinking about the ideas and customs of the people from the time in question. Through her continued research, she has come to feel that studying the spaces humans have lived in is to explore past people's ways of living and the changes in them over time.



Another side

Associate Professor Fukuda commutes to the university on Japan Railways' Special Rapid Service train from Kyoto. Since this takes some time, she's always trying to figure out who is getting off at the next stop so she can sit down. Recently she's had trouble with this, and is right only about twenty percent of the time. Also, from a very young age she has enjoyed old buildings and music—the older the better—and she similarly is attracted to older things (as long as they are written down) in her research.

Professor Kenji Mizuseki, Physiology, Graduate School of Medicine

Professor Mizuseki specializes in Physiology. He studies the mechanism of memory using electrophysiology and optogenetics, focusing on the hippocampus, which is a brain region essential for memory, and its associated regions. For neural activity in the brain, which had only been able to be observed before, Professor Mizuseki's laboratory succeeded in controlling its activity using optogenetics. The advantage of Professor Mizuseki's laboratory is that they can step into the causal relationship between neural activity and memory by artificially controlling neural activity.

In March, 2016, Professor Mizuseki was awarded the prize of the 56th Toray Science and Technology Grant for "An elucidation of the principles of

projection-specific information routing by principal cells in the subiculum". This was a study of determining what type of information is transferred from the subiculum, which is an exit of the information entered in the hippocampus, to each brain region, and it has been receiving attention in that field.

Today Professor Mizuseki still continues his studies, believing that basic research about the mechanism of memory will help to prevent dementia, depression and/or posttraumatic stress disorder (PTSD) and provide a basis for a highly effective therapeutic development in the future.



Another side

Professor Mizuseki played soccer in junior high school, high school and university. He goes to the gym every day after work, and also likes to swim and run. In March, 2016, he completed the 10 km Takoyaki Marathon in Osaka! (His time is a secret). Professor Mizuseki, who loves to not only study but also exercise, is working out daily to be able to run in a full marathon someday.

International Student Profiles



Yuxiang Qiu

Nationality: Taiwan

Graduate School of Literature and Human Sciences, Research student

Yuxiang is studying at Osaka City University as a research student in the Graduate School of Literature and Human Sciences. He received a prestigious scholarship from the Interchange Association in Taiwan to study in Japan. To apply to OCU, he looked at the information on the website and contacted a professor with the request to become his academic supervisor.

Yuxiang's original field of study is theatre. He has been on-stage as an actor himself many times, as you can see in the photo. At OCU he is now following two small-group classes on Chinese literature and Chinese movie history. The small classes allow for very lively and frank discussions among students. Apart from his compulsory classes he is also taking extra classes as an auditor, such as Japanese

Literature History, Introduction to Museology, and Folklore. You can get an idea of his daily life in the article on page 2.

When we asked Yuxiang where he likes to study he said: "On the ground floor of the library building is a study corner which is usually not too quiet and not too loud. I like to study there". In line with the requirements of his scholarship, he says his goal is to obtain a PhD and go back to Taiwan to build up a career in writing and publishing. We hope his time at Osaka City University will be a stepping stone in a successful career and we will be able to give his works a special 'famous alumni' corner in the OCU library one day.



Yuxiang (right) in a theater acting as a sports journalist



Mungunsor Tsogkhuu

Nationality: Mongolia

Faculty of Economics, 1st year student

Mungunsor just started her studies at Osaka City University. She entered via a special admission track that OCU has in place with the

diplomatic missions of several Asian countries in order to attract outstanding international students. Mungunsor came to Japan well-prepared. After Japanese design caught her interest at a young age, she purposively entered a Japanese-style senior high school in Mongolia. She mastered the Japanese language, took study trips to Japan and learned about Japanese culture. Although Mungunsor has a strong passion and talent for fashion design (see one of her own amazing designs in the photo below), she opted to study Economics. "I am really impressed by the quick economic development of Japan in the 20th century and want to bring my study experience back to Mongolia and support the industrial development of Mongolia".

Her first impression of OCU is that professors in the Faculty of Economics really challenge the students to think for themselves and to deeply study their subject. As Mungunsor just started off, she of course has to study hard to keep up with her Japanese fellow students, but because she receives a tuition fee exemption she can fully concentrate on her studies. It seems that she is determined to make the most of the opportunities OCU has to offer and will work hard to make her dream come true: to combine her talent for fashion design with contributing to the economic progress of Mongolia.



In front of the Statue of Godai, near Faculty of Economics building

Fashion design by Mungunsor, based on traditional Mongolia dress

Osaka City University Official Magazine

CITY
X
UNIVERSITY Vol.21

Published by: Osaka City University
Planned and edited by: Corporation Management Division, Public Relations Office
Designed by: desk, Kousoku-Offset

Contact us if you have any questions or comments related to this publication.
Osaka City University, Corporation Management Division, Public Relations Office
3-3-138 Sugimoto, Sumiyoshi-ku, Osaka-shi, 558-8585 JAPAN
Email: t-koho@ado.osaka-cu.ac.jp

Reusing the photographs and text in this publication without permission is strictly prohibited.



大阪市立大学
OSAKA CITY UNIVERSITY

Sugimoto Campus

Faculties, Graduate Schools, and Headquarters of Business, Economics, Law, Literature and Human Sciences, Science, Engineering, and Human Life Sciences
3-3-138 Sugimoto, Sumiyoshi-ku, Osaka-shi, 558-8585 JAPAN

Abeno Campus

Faculty and Graduate School of Medicine, Graduate School of Nursing, and University Hospital
1-4-3 Asahimachi, Abeno-ku, Osaka-shi, 545-8585 JAPAN

Umeda Satellite

Graduate School for Creative Cities and Academic Extension Center
1-2-2-600 Umeda, Kita-ku, Osaka-shi, 530-0001 JAPAN

<http://www.osaka-cu.ac.jp/en>